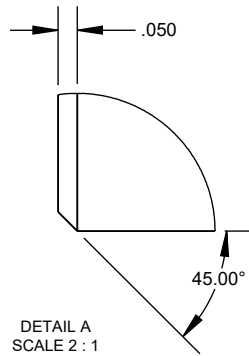
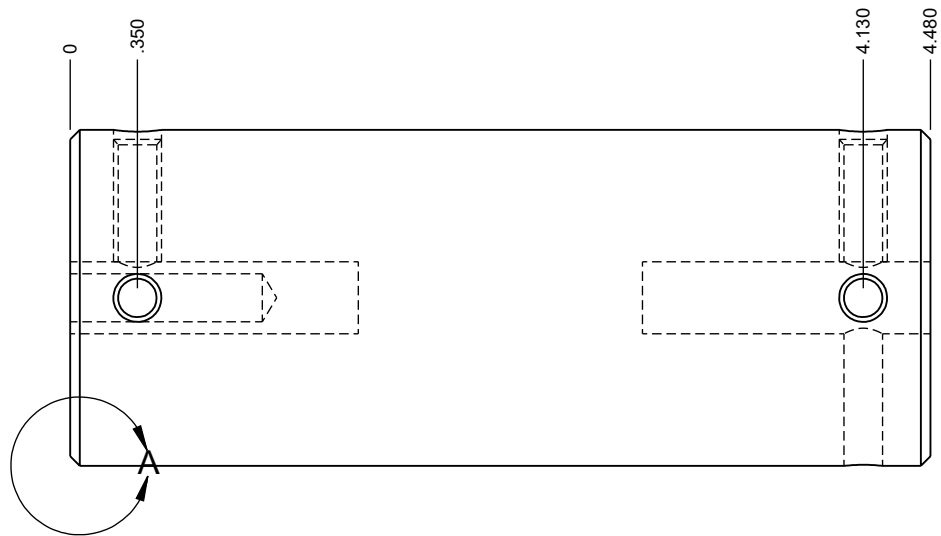
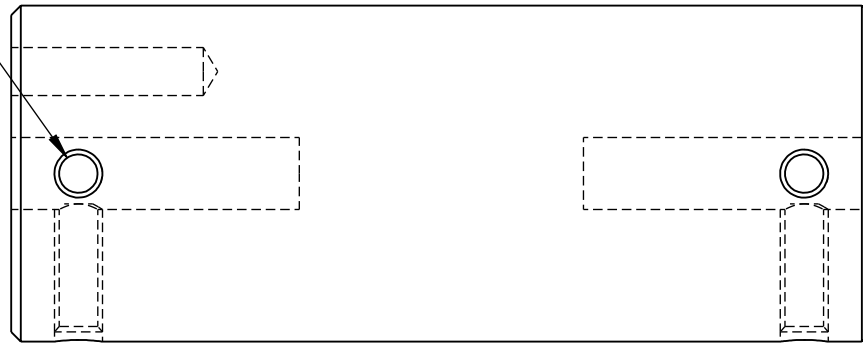
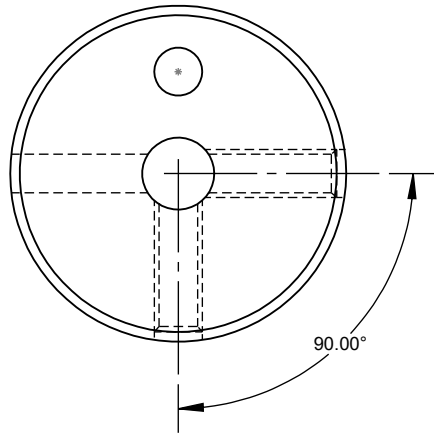


AFM Part Number 103142

Job Number PROPRIETARY AND CONFIDENTIAL THE INFORMATION CONTAINED IN THIS DRAWING IS THE SOLE PROPERTY OF AFM ENGINEERING, INC. ANY REPRODUCTION IN PART OR AS A WHOLE WITHOUT THE WRITTEN PERMISSION OF AFM ENGINEERING INC. IS PROHIBITED.				DIMENSIONS ARE IN INCHES TOLERANCES: FRACTIONAL ±.032 ANGULAR: MACH ± BEND ± TWO PLACE DECIMAL ±.010 THREE PLACE DECIMAL ±.005		<table border="1"> <tr> <th>NAME</th> <th>DATE</th> </tr> <tr> <td>Irwin</td> <td>1/12/2010</td> </tr> <tr> <td>Irwin</td> <td>1/12/2010</td> </tr> <tr> <td>ENG APPR.</td> <td></td> </tr> <tr> <td>MFG APPR.</td> <td></td> </tr> <tr> <td>Q.A.</td> <td></td> </tr> <tr> <td colspan="2">COMMENTS:</td> </tr> </table>		NAME	DATE	Irwin	1/12/2010	Irwin	1/12/2010	ENG APPR.		MFG APPR.		Q.A.		COMMENTS:		AFM Engineering, Inc. AFM Engineering, Inc. Part # 103142 Knurled Roller 2X4 3X6	
		NAME	DATE																				
Irwin	1/12/2010																						
Irwin	1/12/2010																						
ENG APPR.																							
MFG APPR.																							
Q.A.																							
COMMENTS:																							
<table border="1"> <tr> <th>NEXT ASSY</th> <th>USED ON</th> </tr> <tr> <td></td> <td></td> </tr> </table>		NEXT ASSY	USED ON			<table border="1"> <tr> <th>SIZE</th> <th>DWG. NO.</th> <th>REV.</th> </tr> <tr> <td>A</td> <td>15310-001 2X4 3X6</td> <td></td> </tr> </table>		SIZE	DWG. NO.	REV.	A	15310-001 2X4 3X6											
NEXT ASSY	USED ON																						
SIZE	DWG. NO.	REV.																					
A	15310-001 2X4 3X6																						
APPLICATION		MATERIAL 6061 Alloy		FINISH Anodize Black Hard		SCALE:1:1		WEIGHT: 1.001		SHEET 1 OF 2													
		DO NOT SCALE DRAWING																					

4X ϕ .201 THRU
 1/4-20 UNC THRU
 \checkmark ϕ .250 X 82°, NEAR SIDE



PROPRIETARY AND CONFIDENTIAL

THE INFORMATION CONTAINED IN THIS DRAWING IS THE SOLE PROPERTY OF AFM ENGINEERING, INC. ANY REPRODUCTION IN PART OR AS A WHOLE WITHOUT THE WRITTEN PERMISSION OF AFM ENGINEERING INC. IS PROHIBITED.

		DIMENSIONS ARE IN INCHES TOLERANCES: FRACTIONAL \pm .032 ANGULAR: MACH \pm BEND \pm TWO PLACE DECIMAL \pm .010 THREE PLACE DECIMAL \pm .005		NAME	DATE
		MATERIAL		DRAWN	1/12/2010
		6061 Alloy		CHECKED	1/12/2010
		FINISH		ENG APPR.	
		Anoize Black Hard		MFG APPR.	
NEXT ASSY	USED ON	COMMENTS:		Q.A.	
APPLICATION		DO NOT SCALE DRAWING			

AFM Engineering, Inc.

AFM Engineering, Inc.
 Part # 103142
 Knurled Roller 2X4 3X6

SIZE	DWG. NO.	REV.
A	15310-001 2X4 3X6	
SCALE:1:1	WEIGHT: 1.001	SHEET 2 OF 2