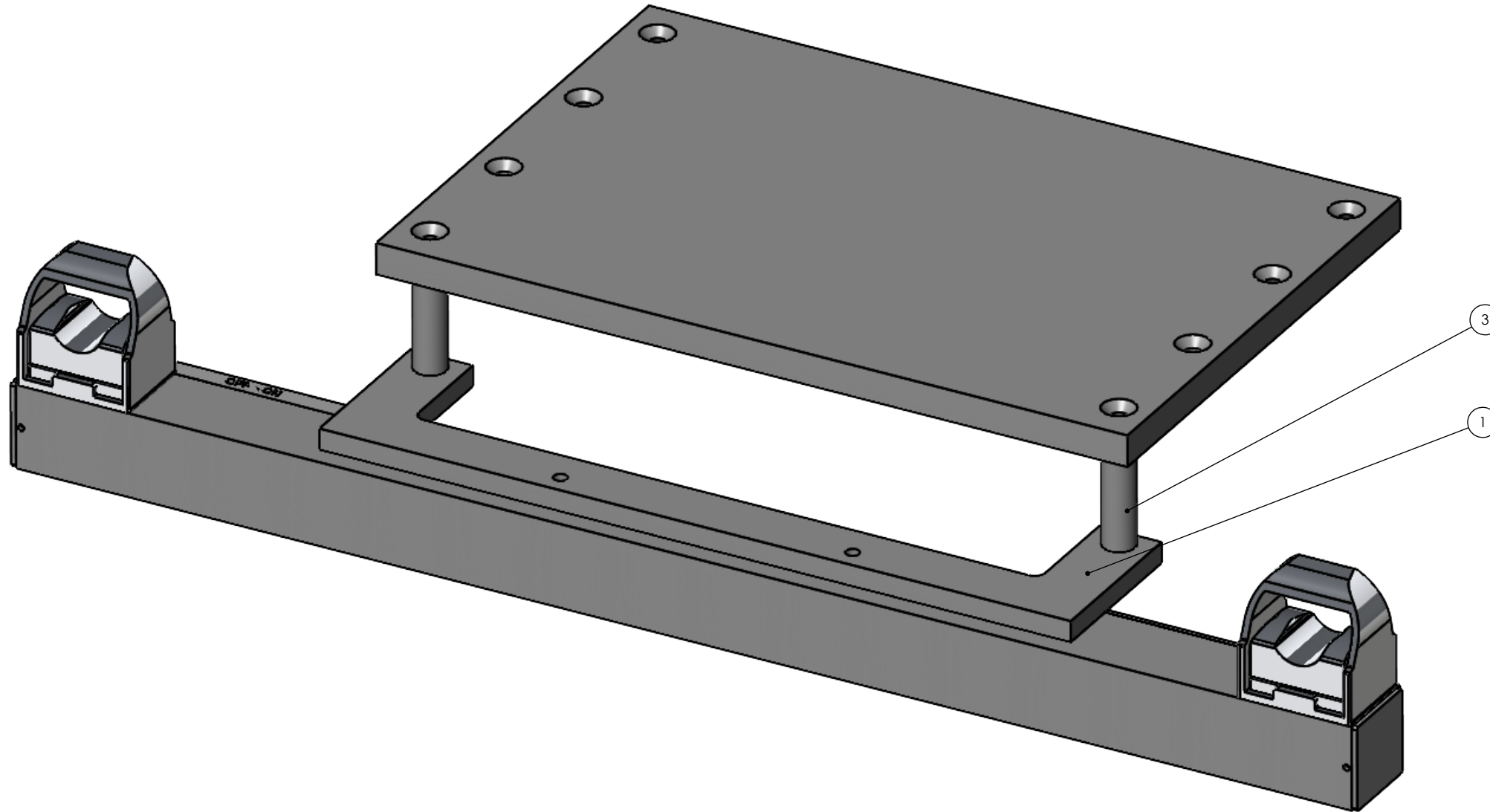


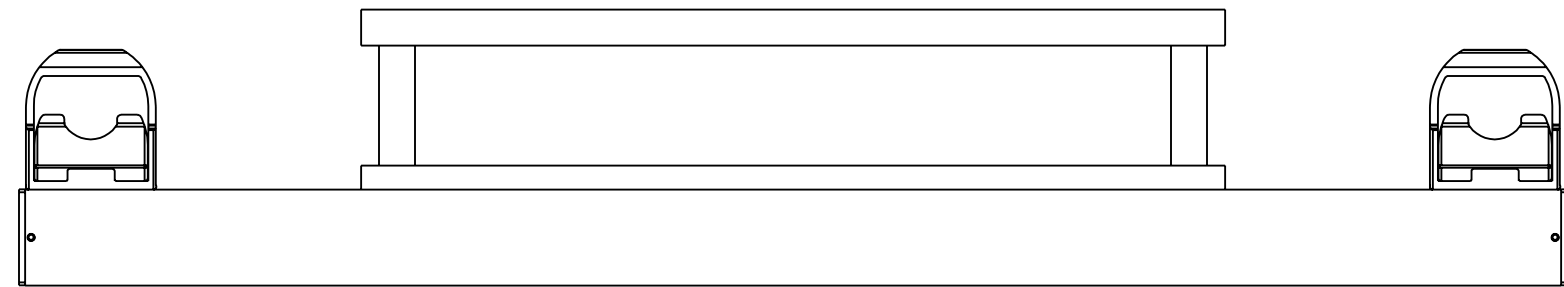
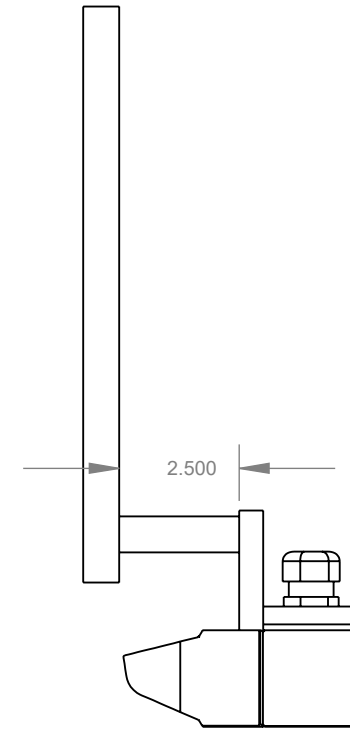
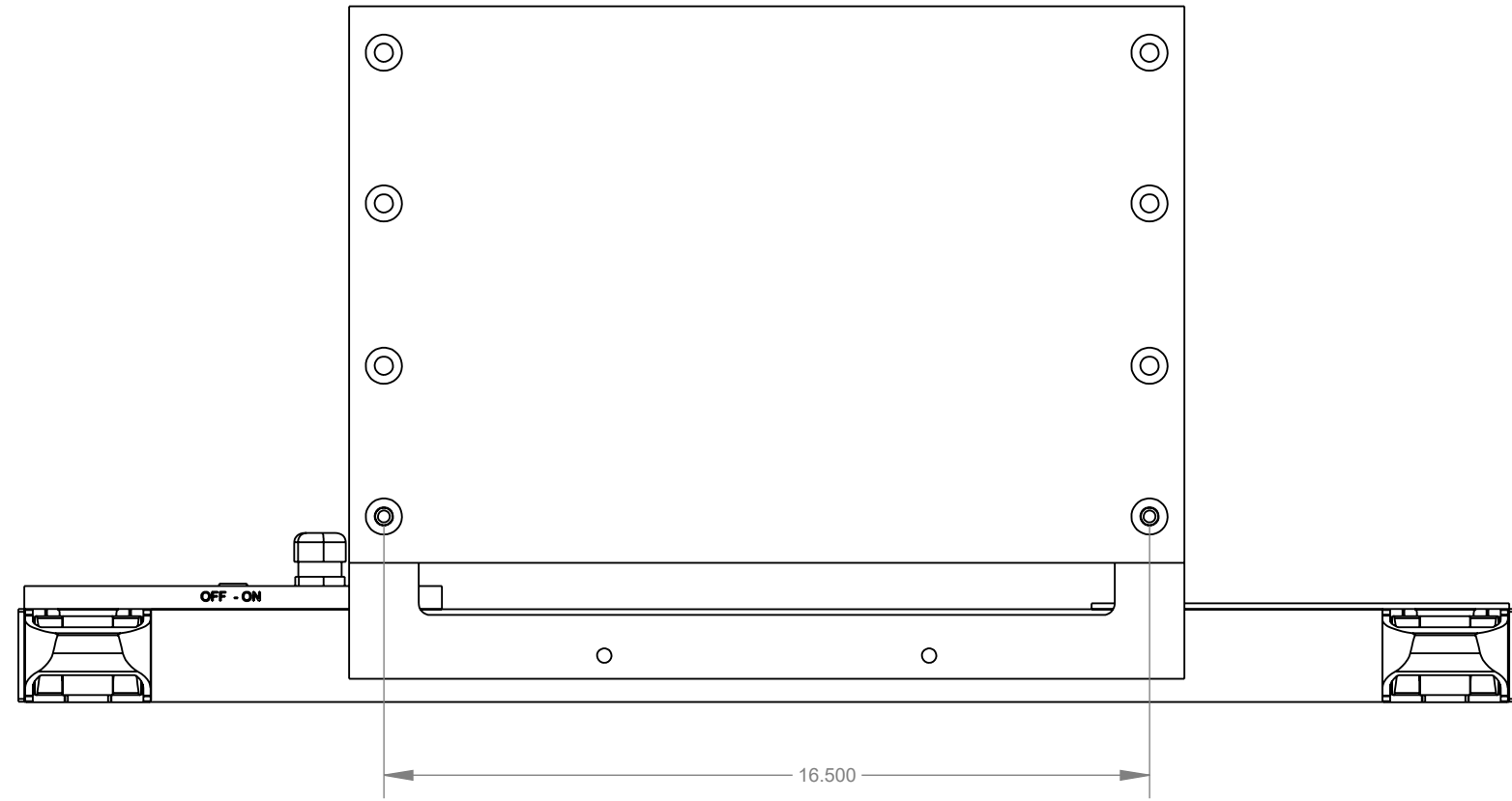
S:\AFMMachines\44000_Retrofit_Kits_Hot_Stamp_Kensol\44500-Palm_Button_Mount\

ITEM NO.	PART NUMBER	PartNo	DESCRIPTION	QTY.
1	44500-002	105077	Palm Button Mounting Plate	1
2	19050-000	103207	Light Touch Palm Button Bar	1
3	19050-005_2.5_Spacer	105079	SPACER	2
4	32200_002_18X12_Kensol	-	-	1



PROPRIETARY AND CONFIDENTIAL
 THE INFORMATION CONTAINED IN THIS DRAWING IS THE SOLE PROPERTY OF AFM ENGINEERING, INC. ANY REPRODUCTION IN PART OR AS A WHOLE WITHOUT THE WRITTEN PERMISSION OF AFM ENGINEERING INC. IS PROHIBITED.

		DIMENSIONS ARE IN INCHES		NAME		DATE	
		TOLERANCES:		DRAWN		-	
		FRACTIONAL		CHECKED		-	
		ANGULAR: MACH BEND		ENG APPR.			
		TWO PLACE DECIMAL .010		MFG APPR.			
		THREE PLACE DECIMAL .005		Q.A.			
		MATERIAL		COMMENTS:			
NEXT ASSY	USED ON	FINISH					
APPLICATION		DO NOT SCALE DRAWING					
						AFM Engineering, Inc.	
						AFM Engineering, Inc Palm Button Mounting Kit Kensol 12X18 Table AFM PART # 105578	
SIZE	DWG. NO.				REV.		
B	000_44500_46T						
SCALE: 1:8				WEIGHT: 23.151		SHEET 1 OF 2	



PROPRIETARY AND CONFIDENTIAL
 THE INFORMATION CONTAINED IN THIS DRAWING IS THE SOLE PROPERTY OF AFM ENGINEERING, INC. ANY REPRODUCTION IN PART OR AS A WHOLE WITHOUT THE WRITTEN PERMISSION OF AFM ENGINEERING INC. IS PROHIBITED.

		DIMENSIONS ARE IN INCHES		NAME	DATE	AFM Engineering, Inc.
		TOLERANCES:		Irwin	-	
		FRACTIONAL		Irwin	-	AFM Engineering, Inc Palm Button Mounting Kit Kensol 12X18 Table AFM PART # 105578
		ANGULAR: MACH BEND				
		TWO PLACE DECIMAL .010				
		THREE PLACE DECIMAL .005				
		MATERIAL		Q.A.		SIZE DWG. NO. B 000_44500_46T
		FINISH		COMMENTS:		
NEXT ASSY	USED ON	APPLICATION		SCALE: 1:8		WEIGHT: 23.151
		DO NOT SCALE DRAWING		SHEET 2 OF 2		REV.